

HP Elite Mini 800 G9 Desktop PC

Need enterprise desktop performance, but don't have a lot of space? Get the best of both worlds with the HP Elite Mini 800 Desktop PC. Small enough to carry home with you when needed, this PC is packed with the performance and security your business demands.



Small size. Big impact.

Get breakthrough performance with the latest Intel® processor² and optional NVIDIA® RTX 3050 Ti graphics³ that provides the speed and responsiveness needed by multi-taskers. Enjoy an immersive experience on up to eight monitors.⁴



Office and home deployment.

The whisper quiet and ultrasmall HP Elite Mini 800 fits easily into most small bags making it the right choice for desktop users who need to move between the home and office. Mount it behind a compatible HP monitor.⁵

HP Recommends Windows 11 Pro for Business¹

Work anywhere without compromising on performance with Windows 11¹ and HP collaboration, security, and connectivity technology.

Powerful Intel® processor

Help speed up demanding business applications with the latest generation Intel® Core™ processor.²

Protected by HP Wolf Security

HP Wolf Security for Business creates a hardware-enforced, always-on, resilient defense. From the BIOS to the browser, above, in, and below the OS, these constantly evolving solutions help protect your PC from modern threats.⁶

Help protect our shared future

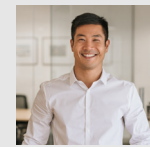
At least 50 percent of all plastic used in this PC is post-consumer recycled plastic.¹² The outer box packaging is 100 percent sustainably sourced.⁸ This PC is ENERGY STAR® certified and EPEAT® registered in 23 countries.⁷

Multiple Deployment Options

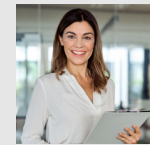
Save space on your desk by mounting the whisper quiet HP Elite Mini 800 with an optional VESA sleeve or power it with a single cable connection to an optional HP 7 Pro Series display with built in collaboration features



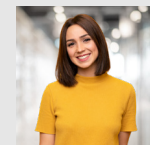
Designed for



Frontline
Pro



Office
Independents



Remote
collaborators

Recommended ecosystem¹⁶



HP Series 7 Pro 27" 4K Thunderbolt 4 Monitor - 727pk + HP B560 PC mounting bracket



HP 655 Wireless
Keyboard and Mouse
Combo



Poly Blackwire
8225



HP Elite Mini 800 G9 Desktop PC

Processor/chipset	12th, 13th or 14th Gen Intel® Core™ Processors 65W up to i9/Q670, vPro® standard ^{2,22}
Power adapter	90W/ 120W/ 180W external power adapter Supports power intake up to 100W with USB Type-C® power delivery
Memory	Two SODIMM slots, up to 64GB DDR5 560050 MT/s
Graphics	Intel® UHD Graphics Support for up to 8 Independent Display Ports via Optional Discrete Nvidia® GeForce RTX 3050 Ti Graphics Card and flex I/O module ⁴
Security	TPM 2.0, HP Manageability Integration KIT Gen5 ²⁰ , HP Image Assistant, HP Sure Run Gen5 ³⁴ , HP Sure Recover Gen5 ²⁷ , HP Sure Click ³³ , HP Sure Sense ³² , HP BIOSphere Gen6 ²⁹ , Unified Local Console (TBD), HP Sure Start Gen7 ²⁶
Connectivity/ports	Intel® Wi-Fi 6E ¹⁶ AX211 + Bluetooth®5.3 Wireless Card; Intel® Wi-Fi 6E ¹⁶ AX211 + Bluetooth®5.3 Wireless Card (non-vPro); Realtek RTL8852BE 802.11ax3 2x2 Wi-Fi® 6 ¹⁰ + Bluetooth®5.3 Wireless Card, Intel BE200 Wi-Fi 7 ²⁸ +Bluetooth® 5.4 vPro/ Non-vPro WLAN Front: (1) Type-C® SuperSpeed USB 20Gbps signaling rate, (1) Type-A™ SuperSpeed USB 10Gbps signaling rate, (1) Type-A™ SuperSpeed USB 10Gbps ⁴⁶ signaling rate (charging port), (1) Combo Audio Jack with CTIA/OMTP headset support Rear: (1) RJ-45, (3) Type-A™ SuperSpeed USB 10Gbps ⁴⁶ signaling rate, (1) HDMI 2.1, (2) DisplayPort™ 1.4, (1) Flex Port 1, (1) Flex Port 2 (see Expansion Slots)
Drive bays/ m.2 slots	(1) 2.5", (1) M.2 2230 for optional Wireless LAN/Bluetooth®, (2) 2 x M.2 2280 for optional SSD ⁴³ drive (allows PCIe NVMe RAID 1)
Expansion slots	1st Flex Port Card: (1) VGA Option Card, (1) HDMI Option Card, (1) DisplayPort™ Option Card, (1) Type-C® SuperSpeed USB 10Gbps w/ DisplayPort™ Alt Mode and up to 100W power intake, (1) Fiber NIC Option Card - 1Gbps), (1) Intel I226-T1 2.5GbE NIC(RJ-45 Port), (1) Dual Type A SuperSpeed USB 5Gbps signaling rate, (1) Serial Port Option card, (1) Thunderbolt™ 3 with USB4.0 Option card (AMO) 2nd Flex Port Card: (1) Serial Port, (1) Nvidia® RTX 3050Ti via 3 x MiniDP 1.4 Ports and 1x Micro HDMI Port, (1) Dual Type A Hi-Speed USB 480Mbps signaling rate, (1) 2nd External Antenna
Storage	(2) M.2 NVMe PCIe Gen4 SSD ⁴³ up to 2TB (1) HDD up to 1TB
Dimensions (w x h x d)	17.7 x 34 x17.5 in / 6.97 x 1.35 x 6.89 in
Sustainability	At least 35 percent of all plastic used in this PC is post-consumer recycled plastic. ¹² It comes in 100 percent recycled molded pulp outer box packaging ¹³ and is ENERGY STAR® certified and EPEAT® registered PC in 19 countries. ⁷



HP Elite Mini 800 G9 Desktop PC

Footnotes

1. Not all features are available in all editions or versions of Windows. Systems may require upgraded and/or separately purchased hardware, drivers, software or BIOS update to take full advantage of Windows functionality. Windows is automatically updated and enabled. High speed internet and Microsoft account required. ISP fees may apply and additional requirements may apply over time for updates. See <http://www.windows.com>.
2. Multicore is designed to improve performance of certain software products. Not all customers or software applications will necessarily benefit from use of this technology. Performance and clock frequency will vary depending on application workload and your hardware and software configurations. Intel's numbering, branding and/or naming is not a measurement of higher performance.
3. Optional feature that must be configured at the time of purchase.
4. Eight displays sold separately and only supported on 35W processor model configured with an NVIDIA GTX 3050Ti graphics card at the time of purchase.
5. Monitor and mounting hardware sold separately or as an optional feature.
6. HP Wolf Security for Business requires Windows 10 or 11 Pro and higher, includes various HP security features and is available on HP Pro, Elite, RPOS and Workstation products. See product details for included security features.
7. Based on US EPEAT® registration according to IEEE 1680.1-2018 EPEAT®. EPEAT® status varies by country. Visit www.epeat.net for more information.
8. 100% outer box packaging made from sustainably sourced certified and recycled fibers. Fiber cushions made from 100% recycled wood fiber and organic material. Any plastic cushions are made from >90% recycled plastic. MIL STD 810 testing is pending and is not intended to demonstrate fitness for U.S. Department of Defense contract requirements or for military use. Test results are not a guarantee of future performance under these test conditions. Any accidental damage requires an optional HP Accidental Damage Protection Care Pack.
10. MIL STD 810 testing is not intended to demonstrate fitness for U.S. Department of Defense contract requirements or for military use. Test results are not a guarantee of future performance under these test conditions. Accidental damage requires an optional HP Accidental Damage Protection Care Pack.
12. Recycled plastic content percentage is based on the definition set in the IEEE 1680.1-2018 standard.
13. Molded Pulp cushions made from 100% recycled wood fiber and organic materials.
16. HP Proprietary Research, 2018
20. HP Manageability Integration Kit can be downloaded from <http://www.hp.com/go/clientmanagement> and requires Microsoft Endpoint Manager.
22. Intel vPro® requires Windows 10 Pro 64 bit or higher, a vPro supported processor, vPro enabled chipset, vPro enabled wired LAN and/or Wi-Fi 6E WLAN and TPM 2.0. Some functionality requires additional 3rd party software in order to run. Features of vPro® Essentials and Enterprise vary. See <http://intel.com/vpro>
26. HP Sure Start Gen7 is available on select HP PCs and requires Windows 10 or 11.
27. HP Sure Recover Gen5 with Embedded Reimaging is an optional feature which requires Windows 10 and higher must be configured at purchase. You must back up important files, data, photos, videos, etc. before use to avoid loss of data. Network based recovery using Wi-Fi is only available on PCs with Intel Wi-Fi Module.
28. Wireless access point and Internet service required and sold separately. Availability of public wireless access points limited. Wi-Fi 7 (802.11BE) functionality requires compatible Windows 11 OS, compatible processor, and separately purchased Wi-Fi 7 router to support backwards compatibility with prior 802.11 specs. Available in countries where Wi-Fi 7 is supported. The specification for 802.11BE is a draft specification and is not final. If the final specification differs from the draft specification, it may affect the ability of the device to communicate with other 802.11BE devices.
29. HP BIOSphere Gen6 requires Windows 10 and is available on select HP Pro and Elite PCs. Features may vary depending on the platform and configurations
32. HP Sure Sense is available on select HP PCs and is not available with Windows 10 Home.
33. HP Sure Click requires Windows 10 and higher. See https://bit.ly/2PrLT6A_SureClick for complete details.
34. HP Sure Run Gen5 is available on select HP PCs and requires Windows 10 or higher.
43. For storage drives, GB = 1 billion bytes. TB = 1 trillion bytes. Actual formatted capacity is less. Up to 30 GB (for Windows) of disk is reserved for system recovery software.
46. SuperSpeed USB 10Gbps compliant device is required to take full advantage of SuperSpeed USB 10Gbps signaling rate ports.

© Copyright 2024 HP Development Company, L.P. The information contained herein is subject to change without notice. The only warranties for HP products and services are set forth in the express warranty statements accompanying such products and services. Nothing herein should be construed as constituting an additional warranty. HP shall not be liable for technical or editorial errors or omissions contained herein.

Intel, Intel Core, Intel vPro and Intel Optane are trademarks of Intel Corporation or its subsidiaries in the U.S. and/or other countries. Thunderbolt is a trademark of Intel Corporation or its subsidiaries in the U.S. and/or other countries. Bluetooth is a trademark owned by its proprietor and used by HP Inc. under license. USB Type-C® and USB-C® are registered trademarks of USB Implementers Forum. DisplayPort™ and the DisplayPort™ logo are trademarks owned by the Video Electronics Standards Association (VESA®) in the United States and other countries. Wi-Fi® is a registered trademark of Wi-Fi Alliance®.

